



Test Report

Applicant : Shenzhen Huafurui Technology Co., Ltd.
Address : Unit 601-03, 6/F, Block A, Building 1, Ganfeng Technology Building, No. 993
Jiaxian Road, Xiangjiaotang Community, Bantian Street, Longgang
District, Shenzhen, P.R. China

Report on the submitted samples said to be:

Sample Name(s) : Smartphone
Trade Mark : CUBOT
Part No. : KINGKONG X
Sample Received Date : March 25, 2024
Testing Period : March 25, 2024 ~ March 30, 2024
Date of Report : April 01, 2024
Testing Location : 901, No.40 Building, Xialang Industrial Zone, Heshuikou Community,
Matian Street, Guangming District, Shenzhen, Guangdong, China
Results : Please refer to next page(s).

TEST REQUEST	CONCLUSION
As specified by client, based on the performed tests on submitted sample, the result of Lead(Pb), Cadmium(Cd), Mercury(Hg), Hexavalent Chromium(Cr(VI)), PBBs, PBDEs, Dibutyl Phthalate(DBP), Butylbenzyl Phthalate(BBP), Di-2-ethylhexyl Phthalate(DEHP) and Diisobutyl phthalate(DIBP) content comply with the limits set by RoHS Directive 2011/65/EU with amendment (EU) 2015/863.	PASS

Signed for and on behalf of LCS

Terry.Luo



**A. EU RoHS Directive 2011/65/EU and its amendment directives**

Test method: Refer to IEC 62321-1:2013&IEC 62321-2:2021&IEC 62321-3-1:2013, Screening by X-ray Fluorescence Spectroscopy (XRF).

Test result(s):

Sample No.	Sample Description	Screening Result(s)						Date of sample submission/ Resubmission
		Cd	Pb	Hg	Cr [▼]	Br [▼]		
						PBBs	PBDEs	
1	Black semi transparent glass screen	BL	BL	BL	BL	BL	BL	2024-03-25
2	Black plastic mesh	BL	BL	BL	BL	BL	BL	2024-03-25
3	Silver metal plate with gray coating	BL	BL	BL	BL	/	/	2024-03-25
4	Black soft plastic outer skin	BL	BL	BL	BL	BL	BL	2024-03-25
5	Black semi transparent glass screen	BL	BL	BL	BL	BL	BL	2024-03-25
6	Black semi transparent glass screen	BL	BL	BL	BL	BL	BL	2024-03-25
7	Silver metal frame with gray coating	BL	BL	BL	BL	/	/	2024-03-25
8	Black plated silver metal screws	BL	BL	BL	BL	/	/	2024-03-25
9	Silver metal plate with gray coating	BL	BL	BL	BL	/	/	2024-03-25
10	Black soft plastic stopper	BL	BL	BL	BL	BL	BL	2024-03-25
11	Black plastic shell	BL	BL	BL	BL	BL	BL	2024-03-25
12	Gold metal nut	BL	BL	BL	BL	/	/	2024-03-25
13	Grey cloth adhesive	BL	BL	BL	BL	BL	BL	2024-03-25
14	Grey foam adhesive	BL	BL	BL	BL	BL	BL	2024-03-25
15	Black plastic sheet	BL	BL	BL	BL	BL	BL	2024-03-25
16	Silver metal shell	BL	BL	BL	BL	/	/	2024-03-25
17	Silver plastic film	BL	BL	BL	BL	BL	BL	2024-03-25
18	Colorless transparent glass sheet	BL	BL	BL	BL	BL	BL	2024-03-25
19	Black plastic sheet	BL	BL	BL	BL	BL	BL	2024-03-25
20	Silver plastic film	BL	BL	BL	BL	BL	BL	2024-03-25
21	White semi transparent plastic film	BL	BL	BL	BL	BL	BL	2024-03-25
22	White plastic film	BL	BL	BL	BL	BL	BL	2024-03-25
23	Colorless transparent plastic board	BL	BL	BL	BL	BL	BL	2024-03-25



Shenzhen LCS Compliance Testing Laboratory Ltd.

Add: 901, No.40 Building, Xialang Industrial Zone, Heshuikou Community, Matian Street, Guangming District, Shenzhen, Guangdong, China

Tel: +(86) 0755-82591330 | E-mail: webmaster@lcs-cert.com | Web: www.lcs-cert.com

Scan code to check authenticity



Sample No.	Sample Description	Screening Result(s)						Date of sample submission/ Resubmission
		Cd	Pb	Hg	Cr [▼]	Br [▼]		
						PBBs	PBDEs	
24	Black plastic tape	BL	BL	BL	BL	BL	BL	2024-03-25
25	Silver semi transparent plastic film	BL	BL	BL	BL	BL	BL	2024-03-25
26	White body (LED)	BL	BL	BL	BL	BL	BL	2024-03-25
27	White FPC	BL	BL	BL	BL	BL	BL	2024-03-25
28	Silver metal plate	BL	BL	BL	BL	/	/	2024-03-25
29	Black plastic sheet	BL	BL	BL	BL	BL	BL	2024-03-25
30	Yellow FPC	BL	BL	BL	BL	BL	BL	2024-03-25
31	Black plastic sheet	BL	BL	BL	BL	BL	BL	2024-03-25
32	Copper colored metal film	BL	BL	BL	BL	/	/	2024-03-25
33	Silver metal shell	BL	BL	BL	BL	/	/	2024-03-25
34	Gold metal port housing	BL	BL	BL	BL	/	/	2024-03-25
35	Black plastic wire skin	BL	BL	BL	BL	BL	BL	2024-03-25
36	Black FPC	BL	BL	BL	BL	BL	BL	2024-03-25
37	Colored glass sheet	BL	BL	BL	BL	BL	BL	2024-03-25
38	Silver metal shell	BL	BL	BL	BL	/	/	2024-03-25
39	Black plastic shell	BL	BL	BL	BL	BL	BL	2024-03-25
40	Copper colored metal wire	BL	BL	BL	BL	/	/	2024-03-25
41	Colorless transparent plastic lenses	BL	BL	BL	BL	BL	BL	2024-03-25
42	Black plastic shell	BL	BL	BL	BL	BL	BL	2024-03-25
43	Black body (IC)	BL	BL	BL	BL	BL	BL	2024-03-25
44	White body (LED)	BL	BL	BL	BL	BL	BL	2024-03-25
45	Black plastic port housing	BL	BL	BL	BL	BL	BL	2024-03-25
46	Black body (IC)	BL	BL	BL	BL	BL	BL	2024-03-25
47	Black body (IC)	BL	BL	BL	BL	BL	BL	2024-03-25
48	Black magnetic core (inductor)	BL	BL	BL	BL	/	/	2024-03-25
49	Black body (IC)	BL	BL	BL	BL	BL	BL	2024-03-25
50	Silver metal shell	BL	BL	BL	BL	/	/	2024-03-25
51	Black body (IC)	BL	BL	BL	BL	BL	BL	2024-03-25
52	Silver metal pins	BL	BL	BL	BL	/	/	2024-03-25
53	Grey soft plastic mat	BL	BL	BL	BL	BL	BL	2024-03-25
54	Silver crystal oscillator	BL	BL	BL	BL	/	/	2024-03-25



Shenzhen LCS Compliance Testing Laboratory Ltd.

Add: 901, No.40 Building, Xialang Industrial Zone, Heshuikou Community, Matian Street, Guangming District, Shenzhen, Guangdong, China

Tel: +(86) 0755-82591330 | E-mail: webmaster@lcs-cert.com | Web: www.lcs-cert.com

Scan code to check authenticity



Sample No.	Sample Description	Screening Result(s)						Date of sample submission/ Resubmission
		Cd	Pb	Hg	Cr [▼]	Br [▼]		
						PBBs	PBDEs	
55	Grey magnetic core (inductance)	BL	BL	BL	BL	/	/	2024-03-25
56	Black body (IC)	BL	BL	BL	BL	BL	BL	2024-03-25
57	Soldering	BL	BL	BL	BL	/	/	2024-03-25
58	Black PCB board	BL	BL	BL	BL	BL	BL	2024-03-25
59	Silver metal shell	BL	BL	BL	BL	/	/	2024-03-25
60	Black plastic shell	BL	BL	BL	BL	BL	BL	2024-03-25
61	Black silver plated metal card slot	BL	BL	BL	BL	/	/	2024-03-25
62	Gold metal pins	BL	BL	BL	BL	/	/	2024-03-25
63	Grey plastic shell	BL	BL	BL	BL	BL	BL	2024-03-25
64	Silver metal pressure plate	BL	BL	BL	BL	/	/	2024-03-25
65	Black foam adhesive	BL	BL	BL	BL	BL	BL	2024-03-25
66	Black soft plastic washer	BL	BL	BL	BL	BL	BL	2024-03-25
67	Silver metal port housing	BL	BL	BL	BL	/	/	2024-03-25
68	Black plastic sheet	BL	BL	BL	BL	BL	BL	2024-03-25
69	Gold metal pin	BL	BL	BL	BL	/	/	2024-03-25
70	Silver metal shell	BL	BL	BL	BL	/	/	2024-03-25
71	Red plastic wire skin	BL	BL	BL	BL	BL	BL	2024-03-25
72	Silver metal wire core	BL	BL	BL	BL	/	/	2024-03-25
73	Black plastic wire skin	BL	BL	BL	BL	BL	BL	2024-03-25
74	Silver metal magnet	BL	BL	BL	BL	/	/	2024-03-25
75	Silver plastic film	BL	BL	BL	BL	BL	BL	2024-03-25
76	Black plastic shell	BL	BL	BL	BL	BL	BL	2024-03-25
77	Copper colored metal wire	BL	BL	BL	BL	/	/	2024-03-25
78	Colorless transparent plastic sheet	BL	BL	BL	BL	BL	BL	2024-03-25
79	White dry glue	BL	BL	BL	BL	BL	BL	2024-03-25
80	Silver metal shell	BL	BL	BL	BL	/	/	2024-03-25
81	Black plastic wire skin	BL	BL	BL	BL	BL	BL	2024-03-25
82	Red plastic wire skin	BL	BL	BL	BL	BL	BL	2024-03-25
83	Black soft plastic wire skin	BL	BL	BL	BL	BL	BL	2024-03-25
84	Black plastic shell	BL	BL	BL	BL	BL	BL	2024-03-25
85	Red soft plastic wire	BL	BL	BL	BL	BL	BL	2024-03-25



Shenzhen LCS Compliance Testing Laboratory Ltd.

Add: 901, No.40 Building, Xialang Industrial Zone, Heshuikou Community, Matian Street, Guangming District, Shenzhen, Guangdong, China

Tel: +(86) 0755-82591330 | E-mail: webmaster@lcs-cert.com | Web: www.lcs-cert.com

Scan code to check authenticity



Sample No.	Sample Description	Screening Result(s)						Date of sample submission/ Resubmission
		Cd	Pb	Hg	Cr [▼]	Br [▼]		
						PBBs	PBDEs	
	skin							
86	Silver metal magnet	BL	BL	BL	BL	/	/	2024-03-25
87	Copper colored metal wire	BL	BL	BL	BL	/	/	2024-03-25
88	Silver plastic film	BL	BL	BL	BL	BL	BL	2024-03-25
89	Black PCB board	BL	BL	BL	BL	BL	BL	2024-03-25
90	Silver metal pin	BL	BL	BL	BL	/	/	2024-03-25
91	Black plastic port housing	BL	BL	BL	BL	BL	BL	2024-03-25
92	Red plastic wire skin	BL	BL	BL	BL	BL	BL	2024-03-25
93	Blue plastic wire skin	BL	BL	BL	BL	BL	BL	2024-03-25
94	Silver metal shell	BL	BL	BL	BL	/	/	2024-03-25
95	Silver metal magnet	BL	BL	BL	BL	/	/	2024-03-25
96	Silver metal sheet	BL	BL	BL	BL	/	/	2024-03-25
97	Silver metal shell	BL	BL	BL	BL	/	/	2024-03-25
98	Copper colored metal wire	BL	BL	BL	BL	/	/	2024-03-25
99	White plastic board	BL	BL	BL	BL	BL	BL	2024-03-25
100	Silver battery body	BL	BL	BL	BL	BL	BL	2024-03-25
101	Black FPC	BL	BL	BL	BL	BL	BL	2024-03-25
102	White plastic shell	BL	BL	BL	BL	BL	BL	2024-03-25
103	White plastic fixing parts	BL	BL	BL	BL	BL	BL	2024-03-25
104	Silver metal pin	BL	BL	BL	BL	/	/	2024-03-25
105	Blue body (capacitor)	BL	BL	BL	BL	BL	BL	2024-03-25
106	Silver metal spring clip	BL	BL	BL	BL	/	/	2024-03-25
107	Yellow body (capacitor)	BL	BL	BL	BL	BL	BL	2024-03-25
108	Grey dry glue	BL	BL	BL	BL	BL	BL	2024-03-25
109	White semi transparent plastic sleeve	BL	BL	BL	BL	BL	BL	2024-03-25
110	Red plastic shell	BL	BL	BL	BL	BL	BL	2024-03-25
111	Yellow plastic tape	BL	BL	BL	BL	BL	BL	2024-03-25
112	Yellow enameled wire	BL	BL	BL	BL	/	/	2024-03-25
113	Black plastic sleeve	BL	BL	BL	BL	BL	BL	2024-03-25
114	Black magnetic core (inductor)	BL	BL	BL	BL	/	/	2024-03-25



Shenzhen LCS Compliance Testing Laboratory Ltd.

Add: 901, No.40 Building, Xialang Industrial Zone, Heshuikou Community, Matian Street, Guangming District, Shenzhen, Guangdong, China

Tel: +(86) 0755-82591330 | E-mail: webmaster@lcs-cert.com | Web: www.lcs-cert.com

Scan code to check authenticity



Sample No.	Sample Description	Screening Result(s)						Date of sample submission/ Resubmission
		Cd	Pb	Hg	Cr ^{VI}	Br ^{VI}		
						PBBs	PBDEs	
115	Black plastic bracket	BL	BL	BL	BL	BL	BL	2024-03-25
116	Silver metal aluminum plate	BL	BL	BL	BL	/	/	2024-03-25
117	Black body (BD1)	BL	BL	BL	BL	BL	BL	2024-03-25
118	Green PCB board	BL	BL	BL	BL	BL	BL	2024-03-25
119	Soldering	BL	BL	BL	BL	/	/	2024-03-25
120	Black body (Q1)	BL	BL	BL	BL	BL	BL	2024-03-25
121	Black body (U2)	BL	BL	BL	BL	BL	BL	2024-03-25
122	White plastic wire skin	BL	BL	BL	BL	BL	BL	2024-03-25
123	White plastic shell	BL	BL	BL	BL	BL	BL	2024-03-25
124	Green PCB board	BL	BL	BL	BL	BL	BL	2024-03-25
125	Soldering	BL	BL	BL	BL	/	/	2024-03-25
126	Gold metal wire	BL	BL	BL	BL	/	/	2024-03-25
127	Blue enameled wire	BL	BL	BL	BL	/	/	2024-03-25
128	Silver metal shrapnel	BL	BL	BL	BL	/	/	2024-03-25
129	Blue PCB board	BL	BL	BL	BL	BL	BL	2024-03-25
130	White plastic wire cover (outer)	BL	BL	BL	BL	BL	BL	2024-03-25
131	White soft plastic plug housing	BL	BL	BL	BL	BL	BL	2024-03-25
132	Silver metal plug housing	BL	BL	BL	BL	/	/	2024-03-25
133	Copper colored metal wire core	BL	BL	BL	BL	/	/	2024-03-25
134	Blue PCB board	BL	BL	BL	BL	BL	BL	2024-03-25

Note:

- Results were obtained by XRF for primary screening, and further chemical testing by ICP(for Cd, Pb, Hg), UV-Vis(for Cr(VI)) and GC-MS(for PBBs, PBDEs) are recommended to be performed, if the concentration exceeds the below warning value according to IEC 62321-3-1:2013(Unit: mg/kg).





Element	Polymers	Metals	Composite material
Cd	$BL \leq (70-3\sigma) < X < (130+3\sigma) \leq OL$	$BL \leq (70-3\sigma) < X < (130+3\sigma) \leq OL$	$LOD < X < (150+3\sigma) \leq OL$
Pb	$BL \leq (700-3\sigma) < X < (1300+3\sigma) \leq OL$	$BL \leq (700-3\sigma) < X < (1300+3\sigma) \leq OL$	$BL \leq (500-3\sigma) < X < (1500+3\sigma) \leq OL$
Hg	$BL \leq (700-3\sigma) < X < (1300+3\sigma) \leq OL$	$BL \leq (700-3\sigma) < X < (1300+3\sigma) \leq OL$	$BL \leq (500-3\sigma) < X < (1500+3\sigma) \leq OL$
Cr	$BL \leq (700-3\sigma) < X$	$BL \leq (700-3\sigma) < X$	$BL \leq (500-3\sigma) < X$
Br	$BL \leq (300-3\sigma) < X$	N/A	$BL \leq (250-3\sigma) < X$

Remark:

- BL= Below Limit
 - OL= Over Limit
 - X= The range of needing to do further testing
 - 3σ= The reproducibility of analytical instruments
 - N/A= Not applicable
 - LOD= Detection limit
2. The XRF screening test for RoHS elements – The reading may be different to the actual content in the sample be of non-uniformity composition.
 3. The maximum permissible limit is quoted from the document RoHS Directive 2011/65/EU with amendment (EU) 2015/863.
 4. ▼=For restricted substances PBBs and PBDEs, the results show the total Br content, the restricted substance was Cr(VI), and the results showed the total Cr content.



RoHS Restricted Substances	Maximum Concentration Value (mg/kg) (by weight in homogenous materials)
Cadmium(Cd)	100
Lead(Pb)	1000
Mercury(Hg)	1000
Hexavalent Chromium(Cr(VI))	1000
Polybrominated biphenyls(PBBs)	1000
Polybrominated diphenylethers(PBDEs)	1000
Dibutyl Phthalate(DBP)	1000
Butylbenzyl Phthalate(BBP)	1000
Di-(2-ethylhexyl) Phthalate(DEHP)	1000
Diisobutyl phthalate(DIBP)	1000

Disclaimers:

This XRF Screening report is for reference purposes only. The applicant shall make its/his/her own judgment as to whether the information provided in this XRF screening report is sufficient for its/his/her purposes. The result shown in this XRF screening report will differ based on various factors, including but not limited to, the sample size, thickness, area, surface flatness, equipment parameters and matrix effect (e.g. plastic, rubber, metal, glass, ceramic etc.). Further wet chemical pre-treatment with relevant chemical equipment analysis are required to obtain quantitative data.



**B. EU RoHS Directive 2011/65/EU with amendment (EU) 2015/863 on DBP, BBP, DEHP & DIBP content**

Test method:

Phthalates(DBP, BBP, DEHP &DIBP) Content:

Refer to IEC 62321-8:2017, by solvent extraction and analysis was performed by gas chromatography-mass spectrometer (GC-MS).

Test result(s):

1) Phthalates(DBP, BBP, DEHP &DIBP)

Tested Item(s)	MDL (mg/kg)	Test Result(s) (mg/kg)		Limit (mg/kg)
		(130)	(131)	
Dibutyl Phthalate(DBP) Content	50	N.D.	N.D.	1000
Butylbenzyl Phthalate(BBP) Content	50	N.D.	N.D.	1000
Di-(2-ethylhexyl) Phthalate(DEHP) Content	50	N.D.	N.D.	1000
Diisobutyl phthalate(DIBP) Content	50	N.D.	N.D.	1000

Tested Item(s)	MDL (mg/kg)	Test Result(s) (mg/kg)	Limit (mg/kg)
		(1+2+4+5+6+10)	
Dibutyl Phthalate(DBP) Content	50	N.D.	1000
Butylbenzyl Phthalate(BBP) Content	50	N.D.	1000
Di-(2-ethylhexyl) Phthalate(DEHP) Content	50	N.D.	1000
Diisobutyl phthalate(DIBP) Content	50	N.D.	1000

Tested Item(s)	MDL (mg/kg)	Test Result(s) (mg/kg)	Limit (mg/kg)
		(11+13+14+15+17+18)	
Dibutyl Phthalate(DBP) Content	50	N.D.	1000
Butylbenzyl Phthalate(BBP) Content	50	N.D.	1000
Di-(2-ethylhexyl) Phthalate(DEHP) Content	50	N.D.	1000
Diisobutyl phthalate(DIBP) Content	50	N.D.	1000





Tested Item(s)	MDL (mg/kg)	Test Result(s) (mg/kg)	Limit (mg/kg)
		(19+20+21+22+23+24)	
Dibutyl Phthalate(DBP) Content	50	N.D.	1000
Butylbenzyl Phthalate(BBP) Content	50	N.D.	1000
Di-(2-ethylhexyl) Phthalate(DEHP) Content	50	N.D.	1000
Diisobutyl phthalate(DIBP) Content	50	N.D.	1000

Tested Item(s)	MDL (mg/kg)	Test Result(s) (mg/kg)	Limit (mg/kg)
		(25+26+27+29+30+31)	
Dibutyl Phthalate(DBP) Content	50	N.D.	1000
Butylbenzyl Phthalate(BBP) Content	50	N.D.	1000
Di-(2-ethylhexyl) Phthalate(DEHP) Content	50	N.D.	1000
Diisobutyl phthalate(DIBP) Content	50	N.D.	1000

Tested Item(s)	MDL (mg/kg)	Test Result(s) (mg/kg)	Limit (mg/kg)
		(35+36+37+39+41+42)	
Dibutyl Phthalate(DBP) Content	50	N.D.	1000
Butylbenzyl Phthalate(BBP) Content	50	N.D.	1000
Di-(2-ethylhexyl) Phthalate(DEHP) Content	50	N.D.	1000
Diisobutyl phthalate(DIBP) Content	50	N.D.	1000

Tested Item(s)	MDL (mg/kg)	Test Result(s) (mg/kg)	Limit (mg/kg)
		(43+44+45+46+47+49)	
Dibutyl Phthalate(DBP) Content	50	N.D.	1000
Butylbenzyl Phthalate(BBP) Content	50	N.D.	1000
Di-(2-ethylhexyl) Phthalate(DEHP) Content	50	N.D.	1000
Diisobutyl phthalate(DIBP) Content	50	N.D.	1000





Tested Item(s)	MDL (mg/kg)	Test Result(s) (mg/kg)	Limit (mg/kg)
		(51+53+56+58+60+63)	
Dibutyl Phthalate(DBP) Content	50	N.D.	1000
Butylbenzyl Phthalate(BBP) Content	50	N.D.	1000
Di-(2-ethylhexyl) Phthalate(DEHP) Content	50	N.D.	1000
Diisobutyl phthalate(DIBP) Content	50	N.D.	1000

Tested Item(s)	MDL (mg/kg)	Test Result(s) (mg/kg)	Limit (mg/kg)
		(65+66+68+71+73+75)	
Dibutyl Phthalate(DBP) Content	50	N.D.	1000
Butylbenzyl Phthalate(BBP) Content	50	N.D.	1000
Di-(2-ethylhexyl) Phthalate(DEHP) Content	50	N.D.	1000
Diisobutyl phthalate(DIBP) Content	50	N.D.	1000

Tested Item(s)	MDL (mg/kg)	Test Result(s) (mg/kg)	Limit (mg/kg)
		(76+78+79+81+82+83)	
Dibutyl Phthalate(DBP) Content	50	N.D.	1000
Butylbenzyl Phthalate(BBP) Content	50	N.D.	1000
Di-(2-ethylhexyl) Phthalate(DEHP) Content	50	N.D.	1000
Diisobutyl phthalate(DIBP) Content	50	N.D.	1000

Tested Item(s)	MDL (mg/kg)	Test Result(s) (mg/kg)	Limit (mg/kg)
		(84+85+88+89+91+92)	
Dibutyl Phthalate(DBP) Content	50	N.D.	1000
Butylbenzyl Phthalate(BBP) Content	50	N.D.	1000
Di-(2-ethylhexyl) Phthalate(DEHP) Content	50	N.D.	1000
Diisobutyl phthalate(DIBP) Content	50	N.D.	1000





Tested Item(s)	MDL (mg/kg)	Test Result(s) (mg/kg)	Limit (mg/kg)
		(93+99+100+101+102+103)	
Dibutyl Phthalate(DBP) Content	50	N.D.	1000
Butylbenzyl Phthalate(BBP) Content	50	N.D.	1000
Di-(2-ethylhexyl) Phthalate(DEHP) Content	50	N.D.	1000
Diisobutyl phthalate(DIBP) Content	50	N.D.	1000

Tested Item(s)	MDL (mg/kg)	Test Result(s) (mg/kg)	Limit (mg/kg)
		(105+107+108+109+110+111)	
Dibutyl Phthalate(DBP) Content	50	N.D.	1000
Butylbenzyl Phthalate(BBP) Content	50	N.D.	1000
Di-(2-ethylhexyl) Phthalate(DEHP) Content	50	N.D.	1000
Diisobutyl phthalate(DIBP) Content	50	N.D.	1000

Tested Item(s)	MDL (mg/kg)	Test Result(s) (mg/kg)	Limit (mg/kg)
		(113+115+117+118+120+121)	
Dibutyl Phthalate(DBP) Content	50	N.D.	1000
Butylbenzyl Phthalate(BBP) Content	50	N.D.	1000
Di-(2-ethylhexyl) Phthalate(DEHP) Content	50	N.D.	1000
Diisobutyl phthalate(DIBP) Content	50	N.D.	1000

Tested Item(s)	MDL (mg/kg)	Test Result(s) (mg/kg)	Limit (mg/kg)
		(122+123+124+129+134)	
Dibutyl Phthalate(DBP) Content	50	N.D.	1000
Butylbenzyl Phthalate(BBP) Content	50	N.D.	1000
Di-(2-ethylhexyl) Phthalate(DEHP) Content	50	N.D.	1000
Diisobutyl phthalate(DIBP) Content	50	N.D.	1000



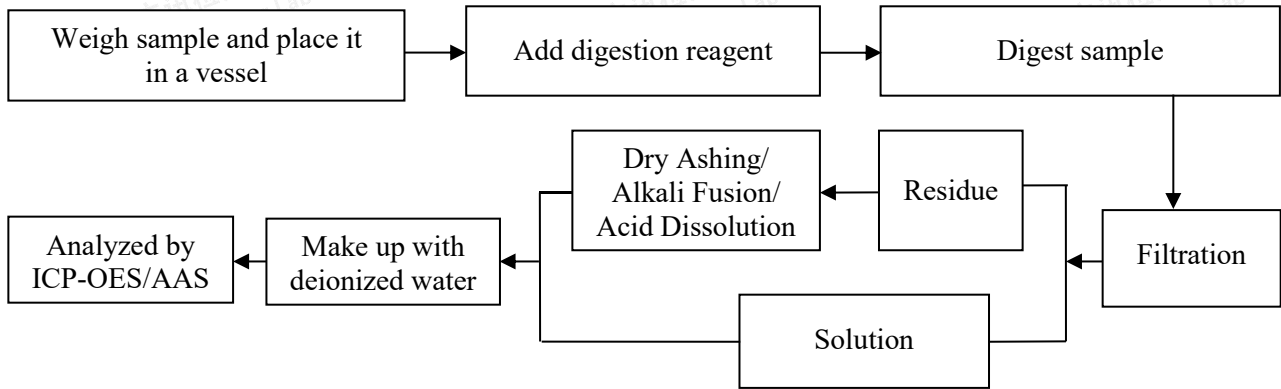


Note:

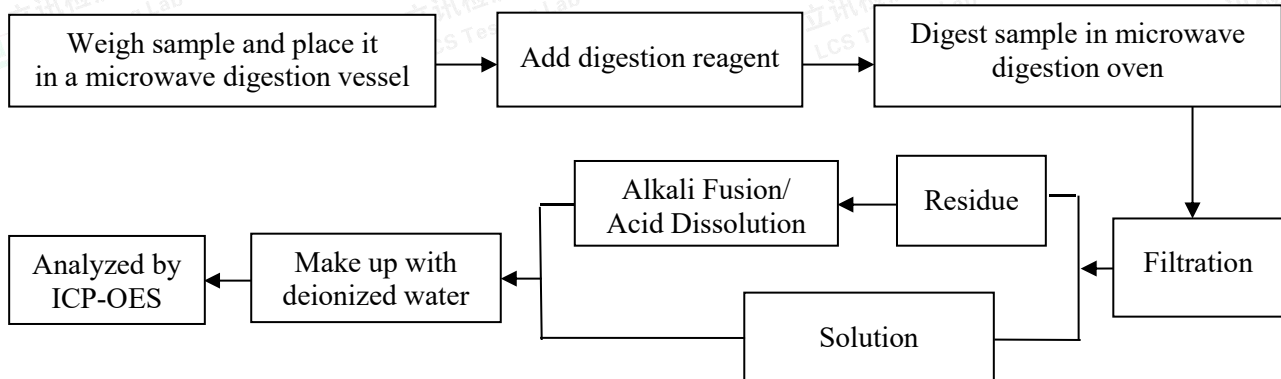
- MDL = Method Detection Limit
- N.D. = Not Detected (<MDL)
- mg/kg= milligram per kilogram=ppm
- According to customer's requirement, only the appointed materials have been tested.

Test Process

1. Lead(Pb) & Cadmium(Cd): IEC 62321-5:2013

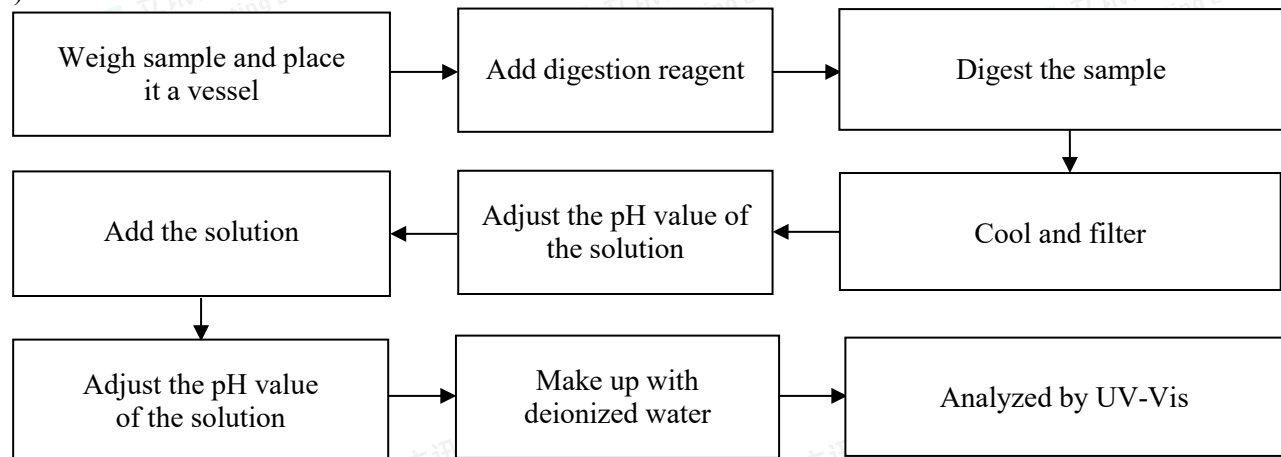


2. Mercury(Hg): IEC 62321-4:2013+AMD1:2017 CSV



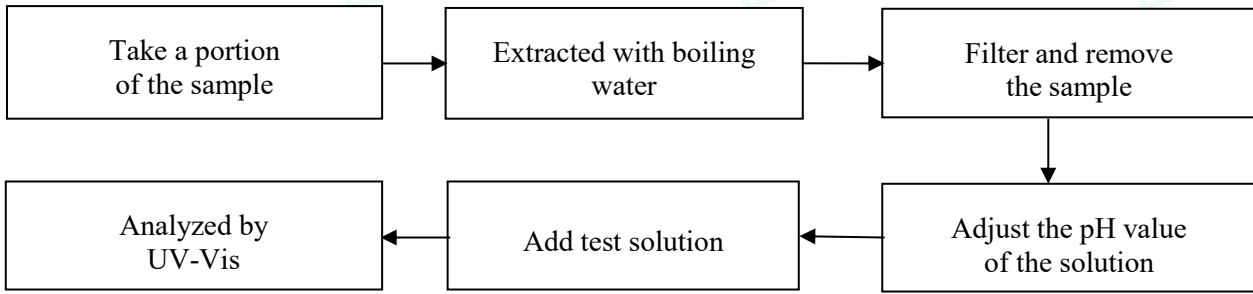
3. Hexavalent Chromium(Cr(VI))

1) IEC 62321-7-2:2017

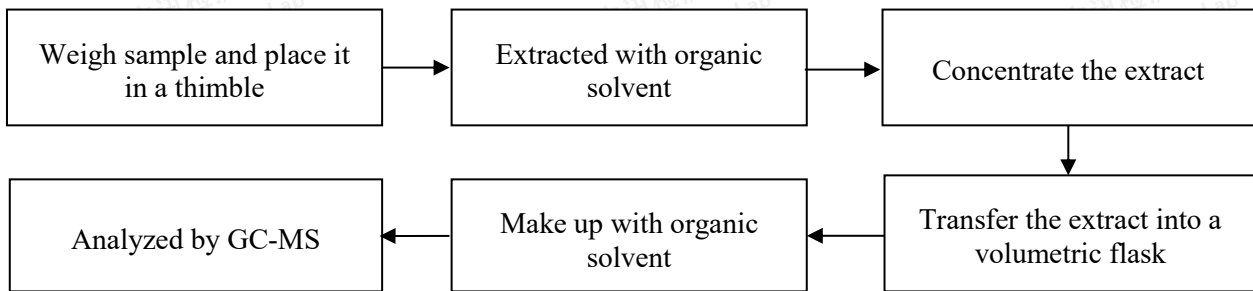




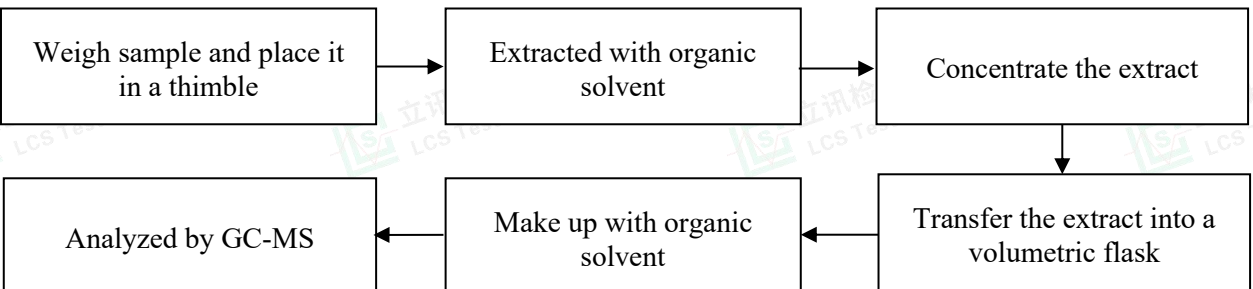
2) IEC 62321-7-1:2015



4. Polybrominated Biphenyls(PBBs) & Polybrominated Diphenyl Ethers(PBDEs) : IEC 62321-6:2015

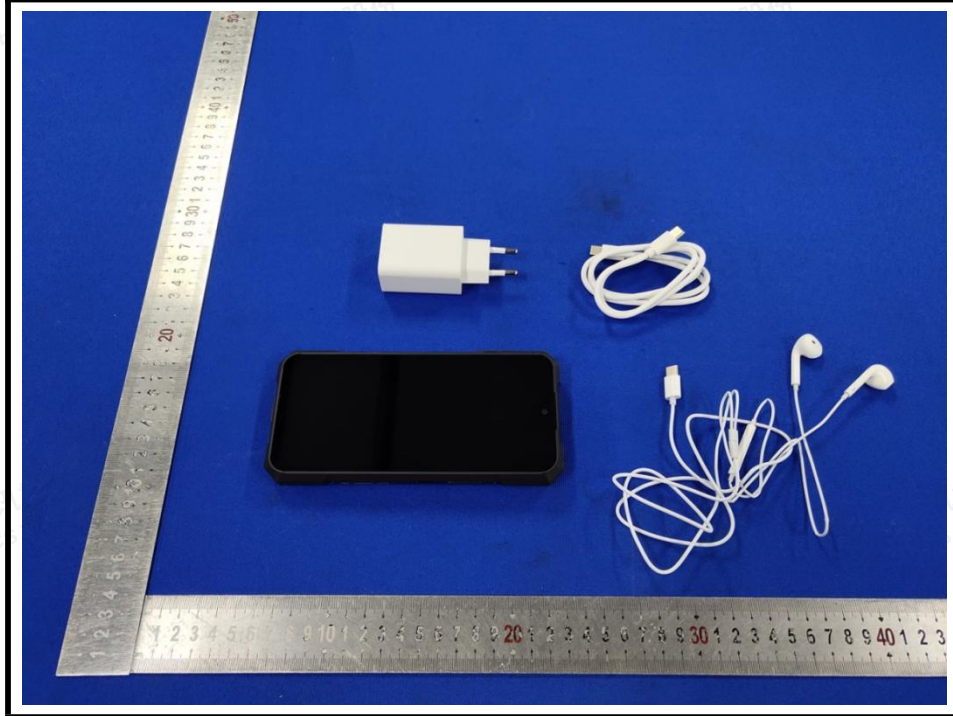


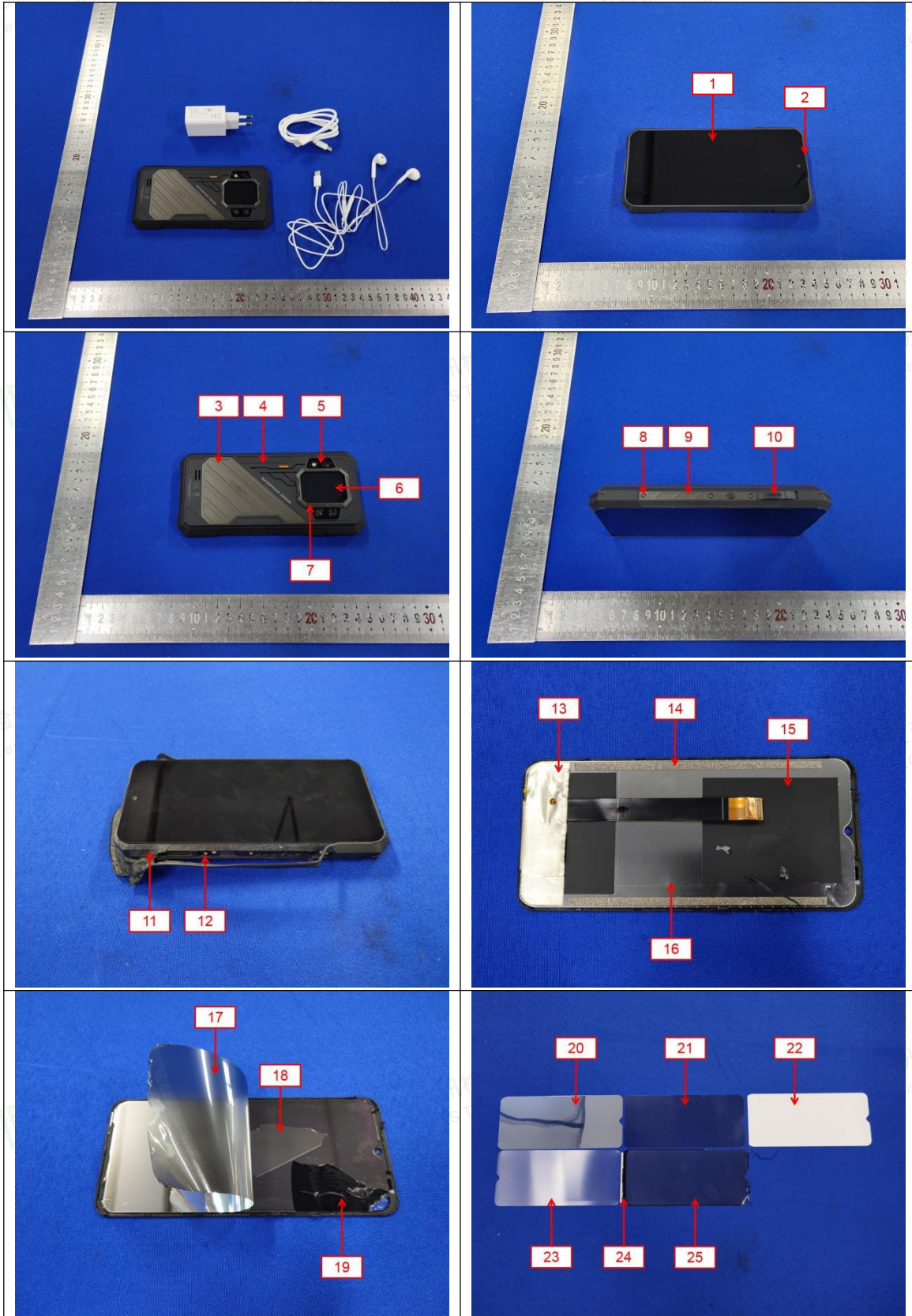
5. Phthalates(DBP, BBP, DEHP & DIBP) : IEC 62321-8:2017

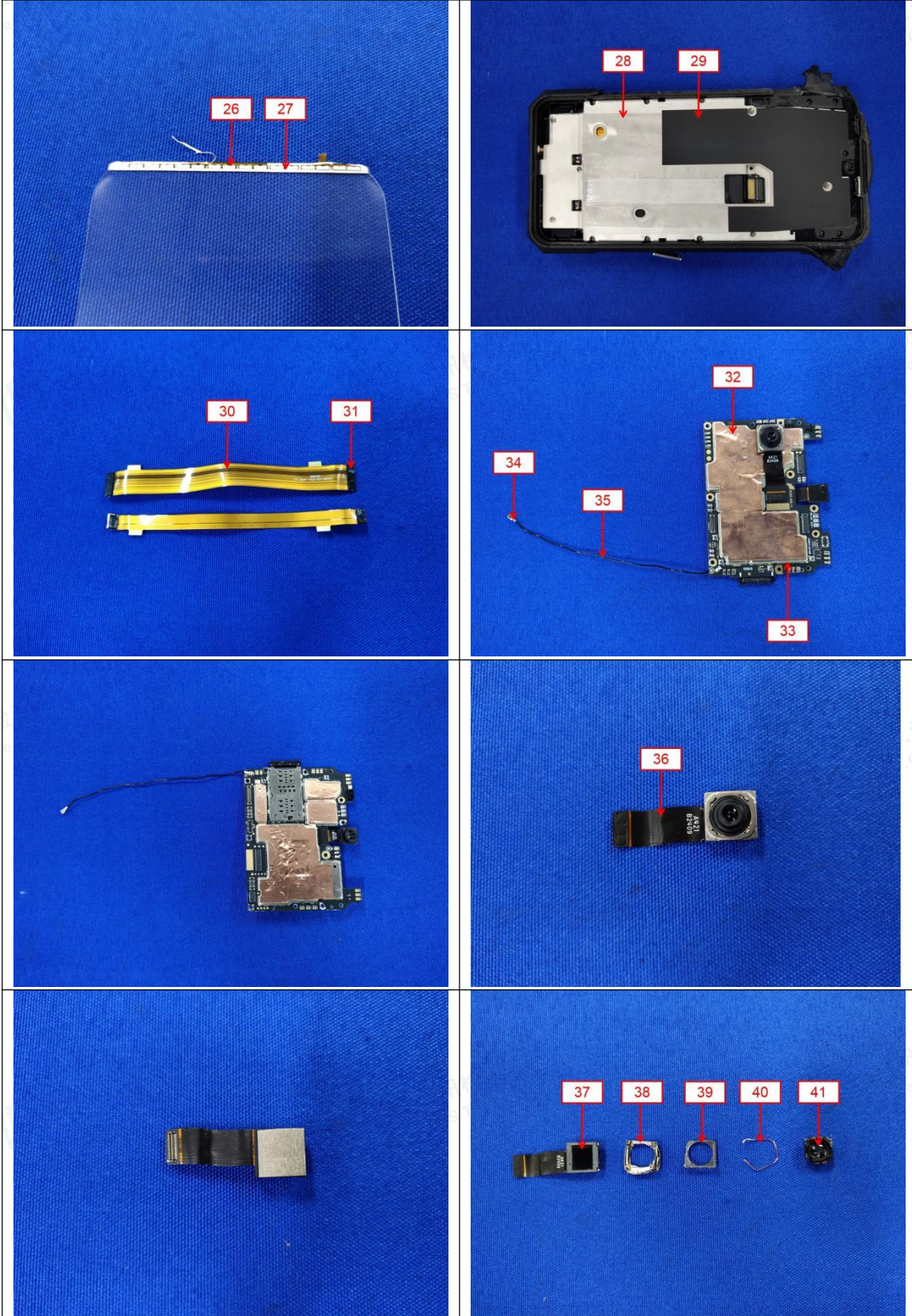


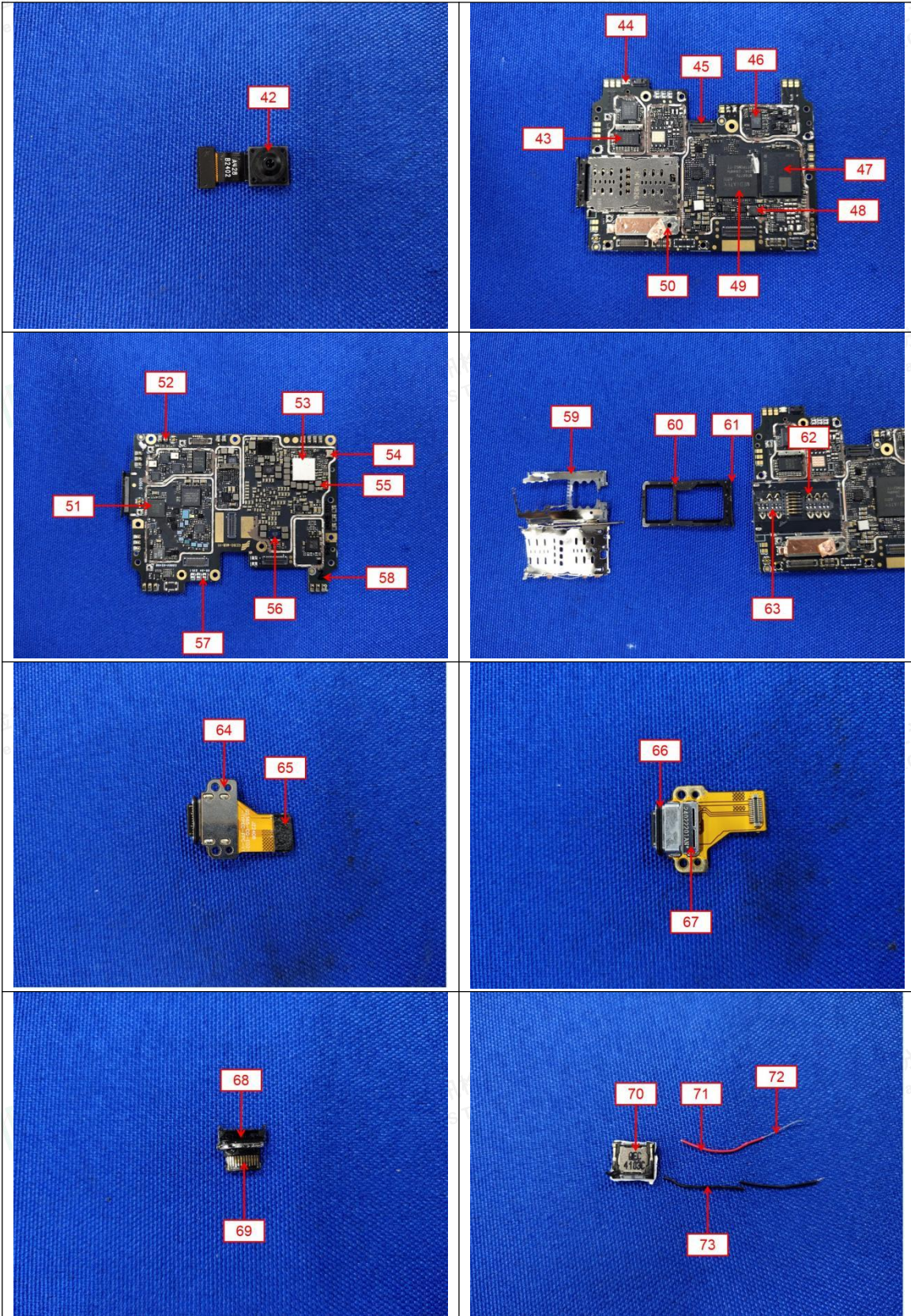


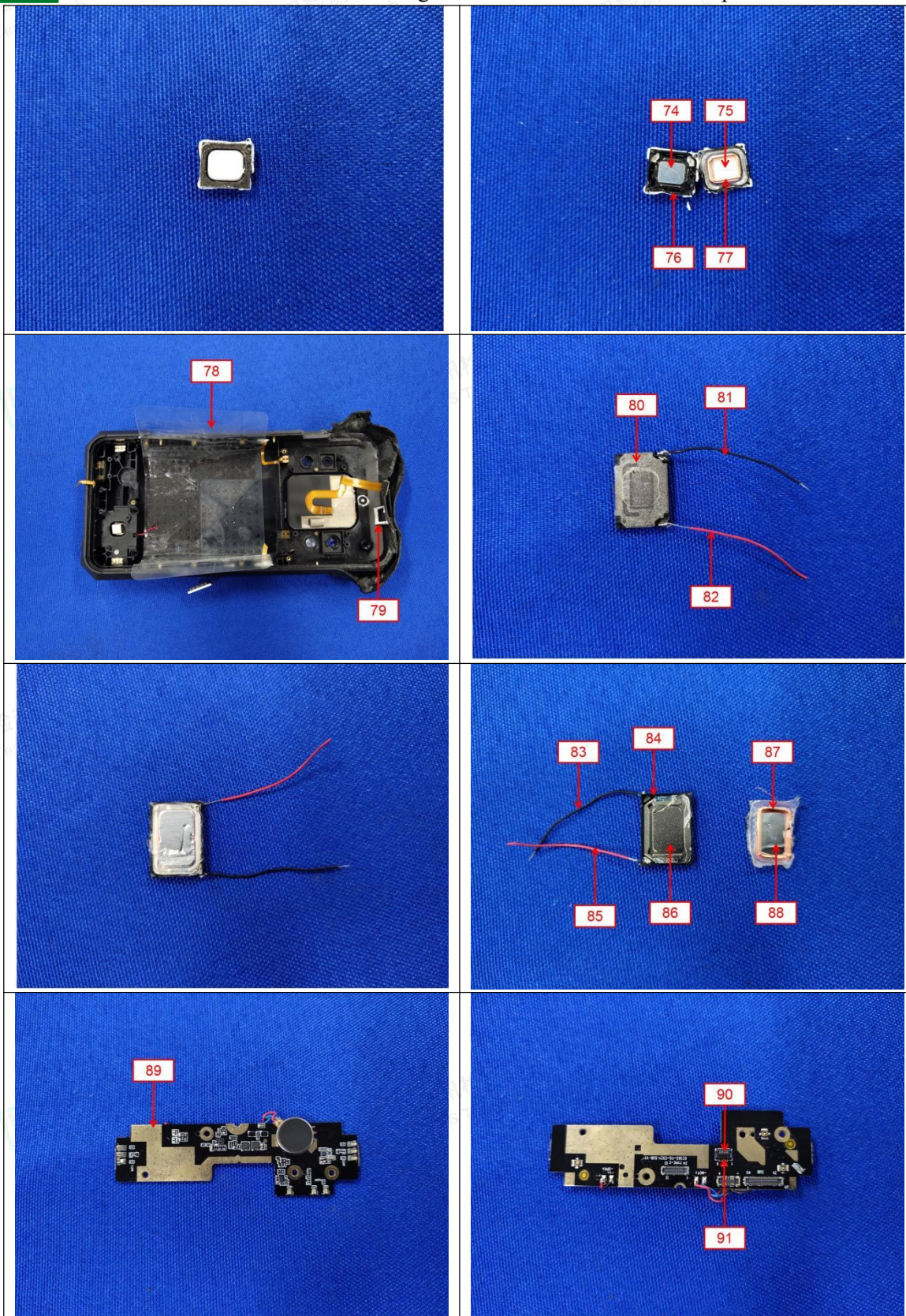
The photo(s) of the sample

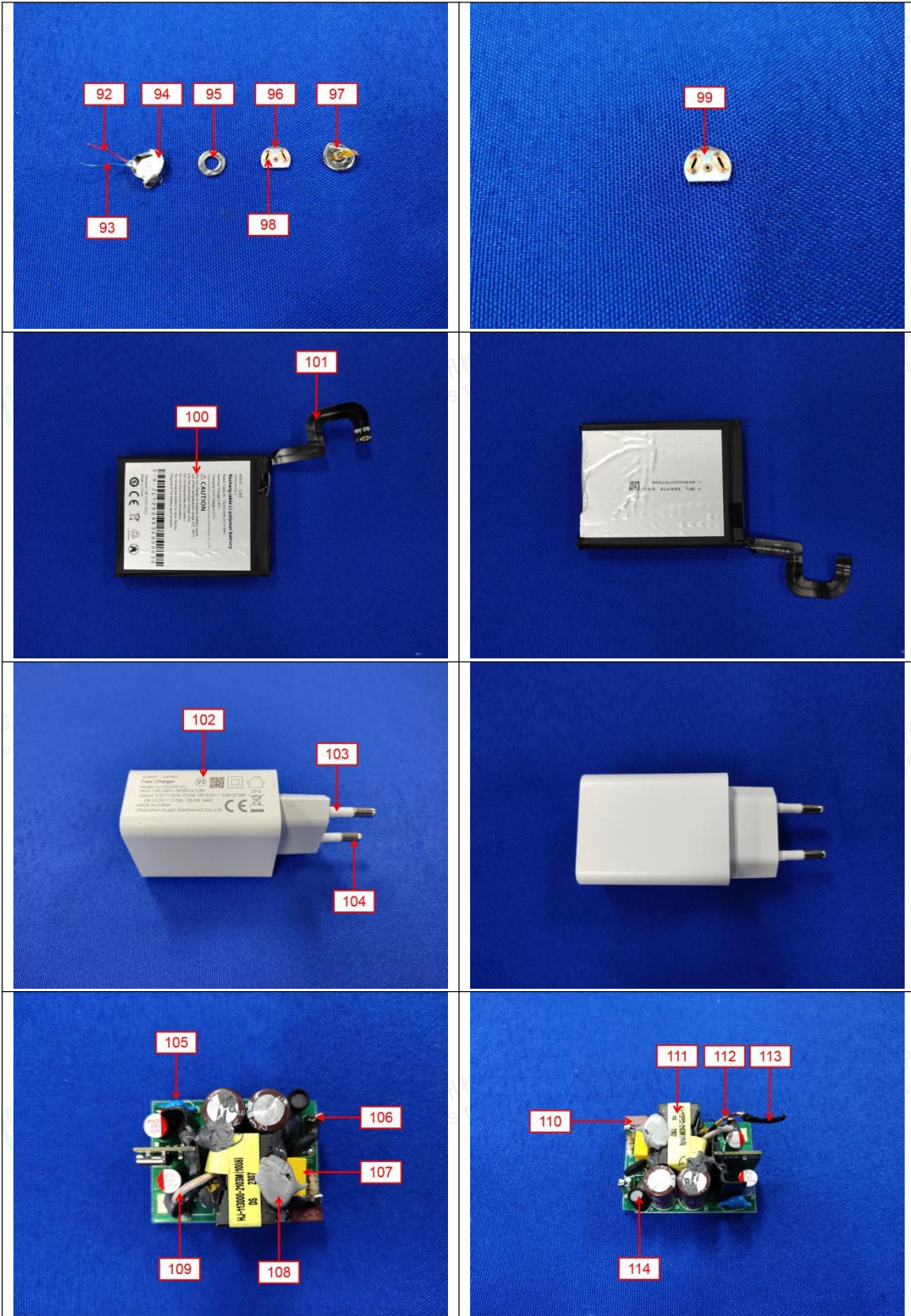


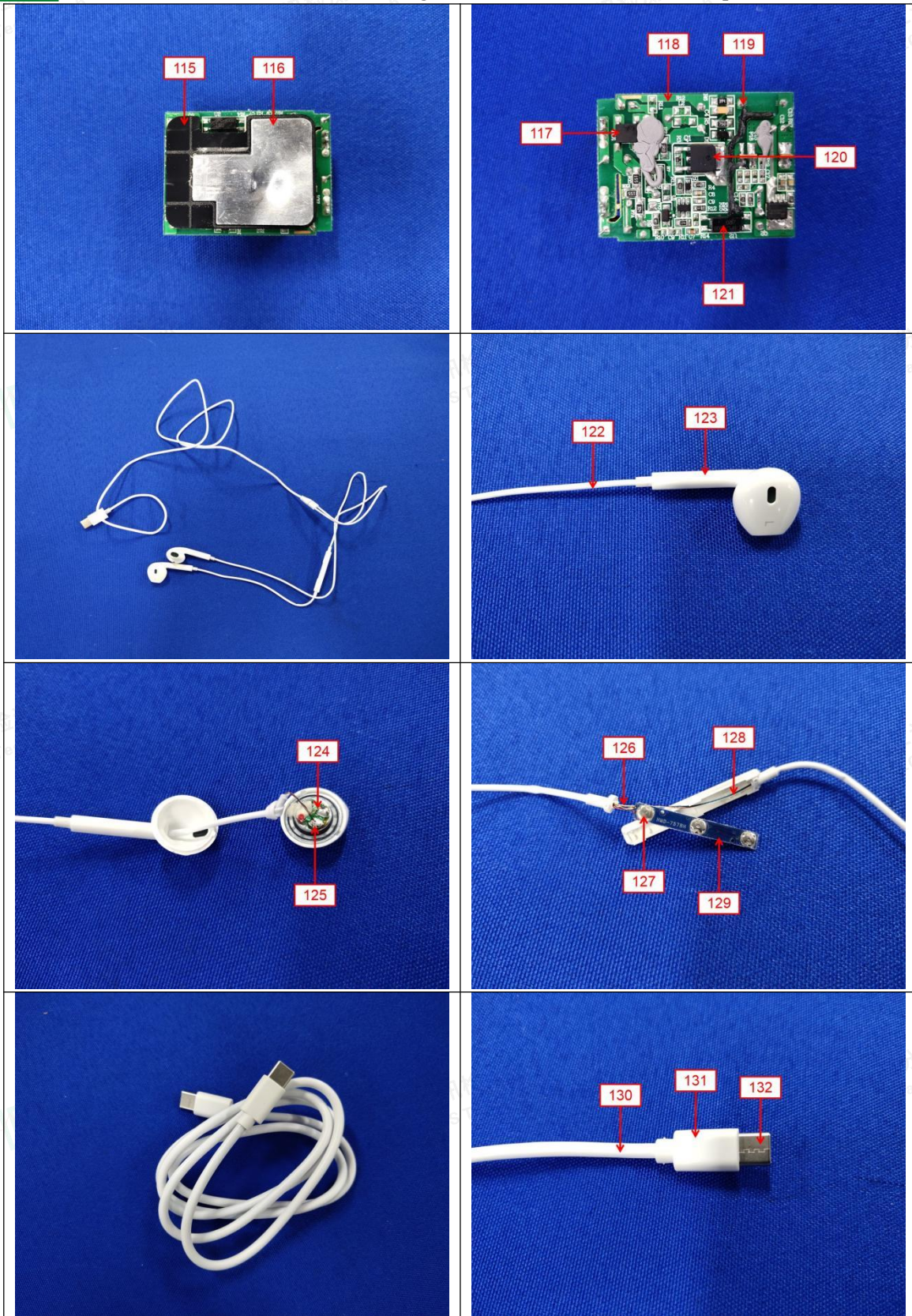


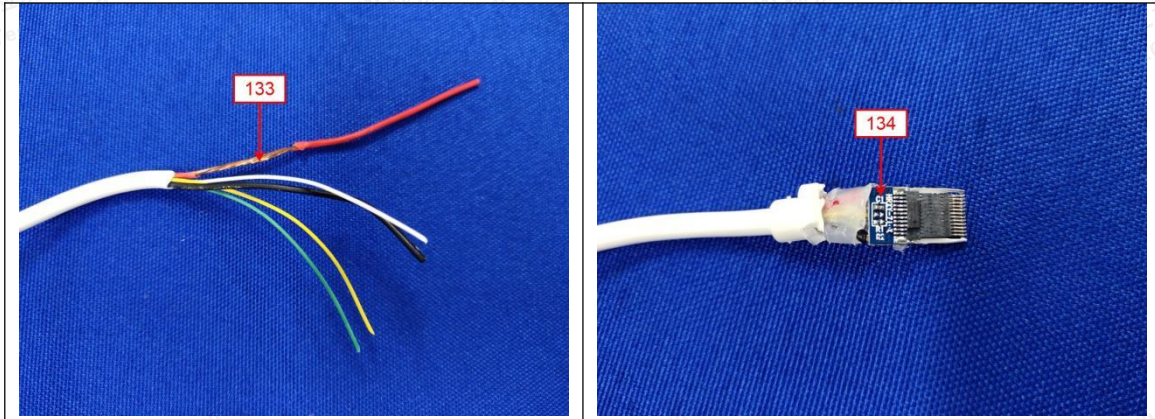












Statement:

1. The test report is invalid without the signature of the approver and the special seal for the company's report;
2. The company name, address and sample information shown on the report were provided by the applicant who should be responsible for the authenticity which are not verified by LCS;
3. The test results in this report are only responsible for the tested samples;
4. Without written approval of LCS, this report can't be reproduced except in full;
5. In case of any discrepancy between the corresponding Chinese and English contents in the test report, the Chinese version shall prevail.

*** End of Report ***

